

BARRACUDA - 316 STAINLESS STEEL

The Barracuda in 316 stainless steel is your choice if you are looking for a powerful LED light source in compact size with superior corrosion resistance. This version of the Barracuda is ideal for use in environments where corrosion is most aggressive such as fishingships, liftvessels, chemical plants and various other marine and offshore applications.

- High Performance LED's
- Integral temperature monitoring device
- Corrosion-resistant 316 Stainless Steel housing
- High thermal conductivity
- A number of electrical protections
- Vibration resistance
- Waterproof, IP69K
- Impact resistance, IK10

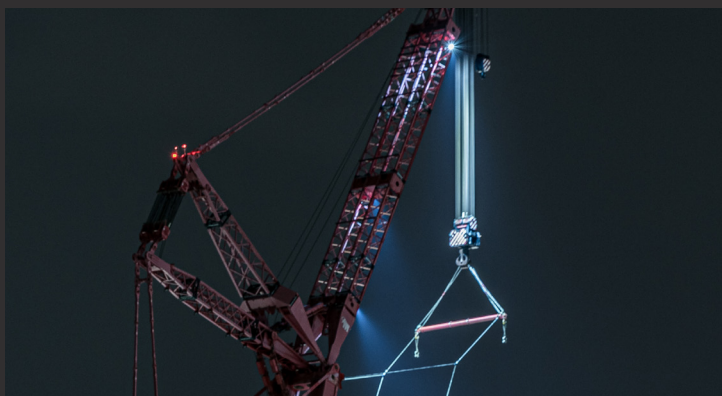


BA48 320SS AC

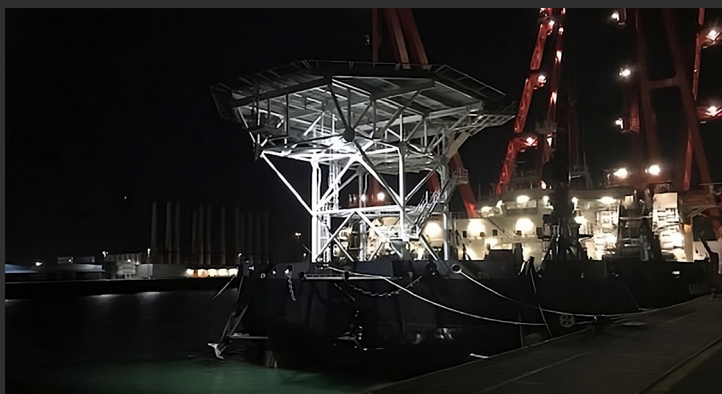
Power : 320W
Light output : 44.100 lm
Efficiency : 138 lm/W
Voltage : 90-305VAC /
180-528VAC

BA48 240SS AC

Power : 240W
Light output : 32.600 lm
Efficiency : 136 lm/W
Voltage : 90-305VAC /
180-528VAC



Choosing the right optics ensures proper illumination of important area's



Various light colours allow for a brightly lit working environment at night

BA48 Specifications

IP-rating : IP69K
Expected life span : 145 000 hours, L80B10
Light angle adjustment : +/- 240° in 30° steps

Weight and packaging

Lamp weight : 14.3 kg
Bracket weight : 1.7 kg
Gross weight : 16.0 kg
Product dimension : 320 x 290 x 90 mm
Packaging dimension : 380 x 350 x 150 mm

Available options

Light angles : 14° - 38° - 70° - 14x46°
Light beam colour : 6500K - 4000K - 2700K - 2200K

