

Operating Manual

Probe for Marine and Offshore for IS-areas

DX14-LMK 457, DX14A-LMK 458,
DX14B-LMK 487, DX14B-LMK 487H, DX15A-LMK 458H

LMK 487(H)



LMK 458H
LMK 487H:



READ THOROUGHLY BEFORE USING THE DEVICE
KEEP FOR FUTURE REFERENCE

ID: BA_FS Schiff_Ex_E | Version: 03.2022.0

© 2022 BDSENSORS GmbH - All rights reserved.

Permissible measuring and cleaning media are gases or liquids, which are compatible with the media wetted parts of the device (according to data sheet) and your system. This must be ensured for the application.

This operating manual applies to devices with explosion protection approval and is intended for the use in IS-areas. A device has an explosion-protection approval if this was specified in the purchase order and confirmed in our order acknowledgement. In addition, the manufacturing label includes a sign.

The user must check whether the device is suited for the selected use. In case of doubt, please contact our sales department: info@bdsensors.de | phone: +49 (0) 92 35 98 11 0 BDSENSORS assumes no liability for any wrong selection and the consequences thereof!

The technical data listed in the current data sheet are engaging and must absolutely be complied with. If the data sheet is not available, please order or download it from our homepage: <http://www.bdsensors.de>

1.4 Incorrect use

	Danger through incorrect use
	<ul style="list-style-type: none"> Only use the device in permissible media and in accordance with its intended use. Do not use the device as a ladder or climbing aid. The device must not be altered or modified in any way. BDSENSORS is not liable for damage caused by improper or incorrect use.

1.5 Limitation of liability and warranty

Failure to observe the instructions or technical regulations, improper use and use not as intended, and alteration of or damage to the device will result in the forfeiture of warranty and liability claims.

1.6 Safe handling

NOTE - Do not use any force when installing the device to prevent damage to the device and the plant!

NOTE - Treat the device with care both in the packed and unpacked condition!

NOTE - Do not throw or drop the device!

NOTE - Excessive dust accumulation and complete coverage with dust must be prevented!

NOTE - The device is state-of-the-art and is operationally reliable. Residual hazards may originate from the device if it is used or operated improperly.

1.7 Safety-related maximum values

DX14-LMK 457:

U_i = 28 V, I_i = 93 mA, P_i = 660 mW, C_i = 14 nF, L_i ≈ 0 μH,
C_{ind} = 74,8 nF / 53 nF
plus cable inductivities 1.5 μH/m and
cable capacities 220 pF/m (for cable by factory)
application in zone 0 (p_{am} 0.8 bar up to 1.1 bar): -20 ... 60 °C
application in zone 1 and higher: -25 ... 70 °C

DX14A-LMK 458:

U_i = 28 V, I_i = 93 mA, P_i = 660 mW, C_i = 105 nF;
L_i = 0 μH; 140 nF opposite GND;
plus cable inductivities 1 μH/m and
cable capacities 160 pF/m (for cable by factory)
application in zone 0 (p_{am} 0.8 bar up to 1.1 bar): -20 ... 60 °C
application in zone 1 and higher: -25 ... 70 °C

DX14B-LMK 487(H):

pressure: U_i = 28 V, I_i = 93 mA, P_i = 660 mW; L_i = 0 μH;
LMK 487: C_i = 49,2 nF; 100 nF opposite GND;
LMK 487H: C_i = 14 nF; 27 nF opposite GND;
temperature: U_i = 30 V, I_i = 54 mA, P_i = 405 mW, C_i = 0 nF,
L_i = 0 μH (temperature element Pt 100)
plus cable inductivities 1 μH/m and
cable capacities 160 pF/m (for cable by factory)
application in zone 0 (p_{am} 0.8 bar up to 1.1 bar): -20 ... 60 °C
application in zone 1 and higher: -25 ... 65 °C

DX15A-LMK 458H:

U_i = 28 V, I_i = 93 mA, P_i = 660 mW; C_i = 94,6 nF;
L_i = 0 μH; 110 nF opposite GND;
plus cable inductivities 1 μH/m and
cable capacities 160 pF/m (for cable by factory)
application in zone 0 (p_{am} 0.8 bar up to 1.1 bar): -20 ... 60 °C
application in zone 1 and higher: -25 ... 70 °C

1.8 Scope of delivery

Check that all parts listed in the scope of delivery are included free of damage, and have been delivered according to your purchase order:

- hydrostatic probe
- this operating manual

1.9 UL approval (for devices with UL marking)

The UL approval was effected by applying the US standards, which also conform to the applicable Canadian standards on safety.

Observe the following points so that the device meets the requirements of the UL approval:

- only indoor usage
- maximum operating voltage: according to data sheet
- The device must be operated via a supply with energy limitation (acc. to UL 61010) or an NEC Class 2 energy supply.

2. Product identification

The device can be identified by means of the manufacturing label with order code. The most important data can be gathered therefrom.

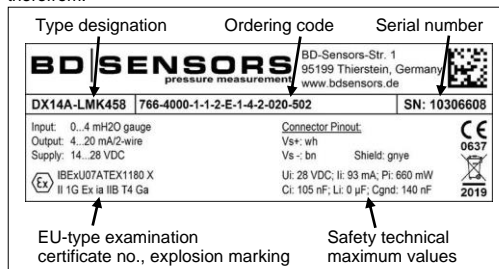


Fig. 1 Example of manufacturing label

NOTE - The manufacturing label must not be removed!

The marking for devices with explosion-protection approval has to include following information:

DX14-LMK 457:
EU-type examination certificate IBExU05ATEX1070 X:
II 1G Ex ia IIC o. IIB T4 Ga / II 1D Ex ia IIIC T110°C Da

DX14A-LMK 458
EU-type examination certificate IBExU 07 ATEX 1180 X:
II 1G Ex ia IIB T4 Ga

DX14B-LMK 487(H)
EU-type examination certificate IBExU 15 ATEX 1066 X:
II 1G Ex ia IIB T4 Ga / II 1D Ex ia IIIC T135 °C Da

DX15A-LMK 458H:
EU-type examination certificate IBExU10ATEX1186 X:
II 1G Ex ia IIB T4 Ga / II 1D Ex ia IIIC T85 °C Da

3. Mounting

3.1 Mounting and safety instructions

	Danger of death from explosion, airborne parts, leaking fluid, electric shock
	<ul style="list-style-type: none"> Always mount the device in a depressurized and de-energized condition! Do not install the device while there is a risk of explosion. Install equipotential bonding along the entire length of the line, both inside and outside the explosion hazard area.

NOTE - The technical data listed in the EU-type examination certificate are binding. Download this by accessing www.bdsensors.de or request it by e-mail or phone: info@bdsensors.de | phone: +49 (0) 92 35 98 11 0

NOTE - Make sure that the entire interconnection of intrinsically safe components remains intrinsically safe. The owner-operator is responsible for the intrinsic safety of the overall system (entire circuitry).

NOTE - If there is increased risk of damage to the device by lightning strike or overvoltage, increased lightning protection must additionally be provided!

NOTE - Treat any unprotected diaphragm with utmost care; this can be damaged very easily.

NOTE - Do not remove the packaging or protective caps of the device until shortly before the mounting procedure, in order to exclude any damage to the diaphragm and the threads! Protective caps must be kept! Dispose of the packaging properly!

NOTE for screw-in and flange version:

- When installing the device, avoid high mechanical stresses on the pressure port! This will result in a shift of the characteristic curve or to damage.
- In hydraulic systems, position the device in such a way that the pressure port points upward (ventilation).
- Do not mount the device in a pneumatic fluid rate!
- Provide a cooling line when using the device in steam piping and clarify the material compatibility.
- The measuring point must be designed in such a way that cavitation and pressure surges are avoided.
- If a gauge pressure measuring device is installed with the pressure port pointing upwards, ensure that no liquid drains off on the device. This could result in humidity and dirt blocking the gauge reference in the housing and could lead to malfunctions.
- The permissible tightening torque depends on the conditions on site (material and geometry of the mounting point). The specified tightening torques for the probe must not be exceeded!

NOTES - for mounting outdoors or in a moist environment (for screw-in and flange version):

- Please note that your application does not show a dew point, which causes condensation and can damage the probe. There are specially protected pressure measuring devices for these operating conditions. Please contact us in such case.
- Connect the device electrically straightaway after mounting or prevent moisture penetration, e.g. by a suitable protective cap. (The ingress protection specified in the data sheet applies to the connected device.)
- Select the mounting position such that splashed and condensed water can drain off. Stationary liquid on sealing surfaces must be excluded!
- The outgoing cable must be routed downwards. If the cable needs to be routed upwards, this must be done in an initially downward curve.
- Mount the device such that it is protected from direct solar radiation. In the most unfavourable case, direct solar radiation leads to the exceeding of the permissible operating temperature. This must be excluded if the device is used in any explosion-hazardous area!
- For devices with gauge reference in the housing (small hole next to the electrical connection), install the device in such a way, that the gauge reference is protected from dirt and moisture. Should the device be exposed to fluid admission, the functionality will be blocked by the gauge reference. An exact measurement in this condition is not possible. Furthermore, this can lead to damages on the device.

3.2 Mounting steps for probes

	Danger of death from explosion
	<ul style="list-style-type: none"> The probe must be installed in such a way that rubbing or impact of the sensor head (sensor element), e. g. against a tank wall, is prevented. It is also important to consider the operating conditions such as flow conditions! This applies specially to probes with a pipe extension with a length of more than 2.8 m.

- mounting accessory is available (as standard, the probe is supplied without fastening material; mounting clamps, terminal clamps and mounting flanges are available as accessories from BDSENSORS)

Fasten the probe properly according to your requirements.

NOTE - Always immerse the device slowly into the fluid to be measured! If the probe strikes the liquid surface, the diaphragm could be damaged or destroyed.

3.2.1 Removal of protective cap (if necessary)

For the protection of the diaphragm, some of the probes have a plugged-on protection cap. If the device shall be used in high-viscosity media such as sludge, a removal of the cap before start-up is necessary. Thus, the sensor becomes flush, and the medium will attain quickly to the diaphragm.

Removal by hand

- Hold the probe in a way that the protection cap points upwards.
- Hold the probe with one hand on the sensor section (1).
- Remove the protection cap (2) with the other hand.

Removal with a tool (recommended)

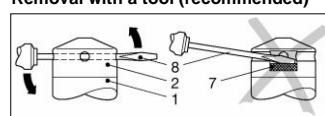


Fig.2 Removal of protection cap

- Hold the probe in a way that the protection cap points upwards.
- Slide a small tool such as a screwdriver (8) straight through two opposite drill holes in the protective cap (2).
- Lever it off by moving up the handle of the screwdriver.

NOTE - Make sure that the sensor (7) under the protection cap will not be damaged!

3.2.2 Cable protection (optional)

According to order, the probe was supplied with cable protection; if the probe was prepared for mounting with stainless steel pipe (optional), the customer must affix a cable protection themselves.

3.3 Mounting steps for flange version

- The mounting thread is clean and undamaged.
 - The O-ring is undamaged and seated in the designated groove at the probe end.
- Screw the mounting thread of the probe into the probe flange by hand.
 - Tighten the device using a suitable open-end wrench. (approx. 25 Nm)
 - Mount the flange according to your requirements.

If you need a new probe flange, this can be ordered from BDSENSORS as an accessory.

3.4 Mounting steps for screw-in version

- The mounting thread is clean and undamaged.
 - The O-ring is undamaged and seated in the designated groove at the probe end.
 - The sealing surface of the taking part e.g. welding socket is perfectly smooth and clean.
- Screw the device into the corresponding thread by hand.
 - Tighten it using a suitable open-end wrench.
G3/4": approx. 15 Nm
G1": approx. 20 Nm
G1 1/2": approx. 25 Nm

4. Electrical connection

4.1 Connection and safety instructions

	Danger of death from electric shock or explosion
	<ul style="list-style-type: none"> Explosion hazard if the operating voltage is too high (max. 28 V_{DC}). Always mount the device in a depressurized and de-energized condition! Do not install the device while there is any risk of explosion. Operate the device only within the specification! (data sheet)

- The limit values listed in the EU-type examination certificate are observed. (Capacity and inductance of the connection cable are not included in the values.)
- The supply corresponds to protection class III (protective insulation).

NOTE - When routing the cable, as bending radiuses has to be complied the 10-fold cable diameter.

NOTE - The PTFE filter, located at the cable end on the air tube, must neither be damaged nor removed.

NOTE - Use a shielded and twisted multicore cable for the electrical connection.

NOTE - If a transition is desired from a probe cable with gauge tube to a cable without gauge tube, we recommend our terminal box KL 1 or KL 2.

4.2 Conditions for the IS-area

Danger generated by electrostatic charging

	Danger of death from explosion
	<ul style="list-style-type: none"> Explosion hazard due to spark formation from electrostatic charging of plastic components. For devices with cable, the cable must be installed tightly. Generally, a shielded cable must be used. Do not clean the device / connection cable, in a dry state! Use a moist cloth, for example.

The following warning sign is affixed on devices with plastic components.

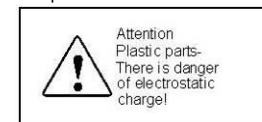


Fig. 3 Warning sign

NOTE - The warning sign must not be removed from the device!

Hit or friction sparks for device in titanium

	Danger of death from explosion
	<ul style="list-style-type: none"> Danger of devices in titanium caused by hit or friction sparks by contact with other bodies or objects. Avoid commuting or swinging of the probe.

Overvoltage protection

If the probe is used as electrical equipment of category 1 G, then a suitable overvoltage protection device must be connected in series (attend the valid regulations for operating safety as well as EN60079-14).

Overvoltage protection

If the probe is used as electrical equipment of category 1 G, then a suitable overvoltage protection device must be connected in series (attend the valid regulations for operating safety as well as EN60079-14).

Schematic circuit

The operation of an intrinsically safe probe in intrinsic safe areas requires special care when selecting the necessary Zener barrier or transmitter repeater devices to allow the utilization of the device's properties to the full extent. The following diagram shows a typical arrangement of power supply, Zener barrier and probe.

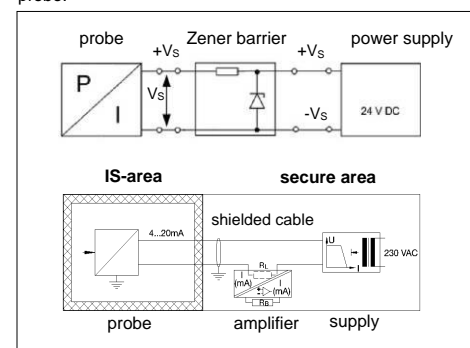


Fig. 4 circuit diagrams

NOTE - Observe item (17) of the type-examination certificate which specifies special conditions for intrinsically safe operation.

1. General and safety-related information on this operating manual

This operating manual enables safe and proper handling of the product, and forms part of the device. It should be kept in close proximity to the place of use, accessible for staff members at any time.

All persons entrusted with the mounting, installation, putting into service, operation, maintenance, removal from service, and disposal of the device must have read and understood the operating manual and in particular the safety-related information.

The following documents are an important part of the operating manual:

- data sheet
- type-examination certificate

For specific data on the individual device, please refer to the respective data sheet.

Download these by accessing www.bdsensors.de or request them: info@bdsensors.de | phone: +49 (0) 92 35 / 98 11 0

The IS versions of our products are variants of the standard products.

Example:

Standard: LMK 458 → IS version: DX14A-LMK 458

In addition, the applicable accident prevention regulations, safety requirements, and country-specific installation standards as well as the accepted engineering standards must be observed.

For the installation, maintenance and cleaning of the device, the relevant regulations, and provisions on explosion protection (VDE 0160, VDE 0165 and/or EN 60079-14) as well as the accident prevention regulations must absolutely be observed. The device was designed by applying the following standards:

DX14: EN IEC 60079-0:2018;
EN 60079-11:2012

DX14A: EN60079-0:2012+A11:2013,
EN60079-11:2012

DX14B: EN60079-0:2018, EN60079-11:2012
IEC 60079-0: 2017 Edition 7
IEC 60079-11: 2011 Edition 6

DX15A: EN60079-0:2012+A11:2013, EN60079-11:2012

1.1 Symbols used

	Warning word	<ul style="list-style-type: none"> Type and source of danger Measures to avoid the danger
	DANGER	<ul style="list-style-type: none"> Imminent danger! Non-compliance will result in death or serious injury.
	WARNING	<ul style="list-style-type: none"> Possible danger! Non-compliance may result in death or serious injury.
	CAUTION	<ul style="list-style-type: none"> Hazardous situation! Non-compliance may result in minor or moderate injury.

NOTE - draws attention to a possibly hazardous situation that may result in property damage in case of non-compliance.

- Precondition of an action

1.2 Staff qualification

Qualified persons are persons that are familiar with the mounting, installation, putting into service, operation, maintenance, removal from service, and disposal of the product and have the appropriate qualification for their activity.

This includes persons that meet at least one of the following three requirements:

- They know the safety concepts of metrology and automation technology and are familiar therewith as project staff.
- They are operating staff of the measuring and automation systems and have been instructed in the handling of the systems. They are familiar with the operation of the devices and technologies described in this documentation.
- They are commissioning specialists or are employed in the service department and have completed training that qualifies them for the repair of the system. In addition, they are authorized to put into operation, to ground, and to mark circuits and devices according to the safety engineering standards.

All work with this product must be carried out by qualified persons!

1.3 Intended use

The device is intended for converting the physical parameter of pressure into an electric signal. It has to be used only for this purpose, considering the following information.

The hydrostatic probes have been designed especially for shipbuilding and offshore applications with rough environmental and operation conditions. The probes are suitable for level measurement of fluids or pasty media (no solids and frozen media) in open tanks, containers, or reservoirs. Based on a rugged and reliable capacitive ceramic sensor the probe is qualified for measuring small filling heights with high accuracy. Typical areas of use are ballast tanks, fuel, and oil tanks as well as service and waste water tanks. The probes as standard complies with the requirements of DNV+GL (Det Norske Veritas+Germanischer Lloyd). The certificates are available for download on our homepage: <http://www.bdsensors.de>

Exemplary circuit description

The supply voltage of e.g. 24 V_{DC} provided by the power supply is led across the Zener barrier. The Zener barrier contains series resistances and breakdown diodes as protective components. Subsequently, the operating voltage is applied to the probe and, depending on the pressure, a particular signal current flows.

	Danger of death from explosion - Operation of intrinsically safe devices as zone-0 equipment only with ungrounded and galvanically isolated power supply.
--	---

Functional selection criteria for Zener barriers and galvanic power supply

The minimum supply voltage V_{S min} of the probe must not fall short since a correct function of the device can otherwise not be guaranteed. The minimum supply voltage has been defined in the respective product-specific data sheet under "Output signal / supply".

When using a galvanically insulated amplifier with linear bonding, note that the terminal voltage of the probe will decrease like it does with a Zener barrier. Furthermore, you have to note that the supply will additionally decrease with an optionally used signal amplifier.

Test criteria for the selection of the Zener barrier

In order not to fall below V_{S min}, it is important to verify which minimum supply voltage is available at full level control of the probe. The full level control, i.e. a maximum or nominal output signal (20 mA), can be reached by applying the maximum physical input signal (pressure).

The technical data of the barrier will usually provide the information needed for the selection of the Zener barrier. However, the value can also be calculated. If a maximum signal current of 0.02 A is assumed, then – according to Ohm's law – a particular voltage drop will result from the series resistance of the Zener barrier.

This voltage drop is subtracted by the voltage of the power supply and as a result, the terminal voltage is obtained which is applied on the probe at full level control. If this voltage is smaller than the minimum supply voltage, another barrier or a higher supply voltage should be chosen.

NOTE - When selecting the ballasts, the maximum operating conditions according to the EU-type examination certificate must be observed. When assessing these, refer to their current data sheets to ensure that the entire interconnection of intrinsically safe components remains intrinsically safe.

NOTE for devices with HART® communication (H-devices)
When selecting the barrier or power supply, you must look out for any ballasts which are not suitable for HART® communication. Most manufacturers offer a device group specially developed for this application.

Calculation example for the selection of the Zener barrier

The nominal voltage of the power supply in front of the Zener barrier is 24 V_{DC} ± 5%. This results in:

- maximum supply voltage:

$$V_{Sup\ max} = 24\ V \cdot 1.05 = 25.2\ V$$

- minimum supply voltage:

$$V_{Sup\ min} = 24\ V \cdot 0.95 = 22.8\ V$$

The series resistance of the Zener barrier is listed with 295 ohm. The following values must still be calculated:

- voltage drop at the barrier (with full conduction):

$$V_{ab\ barrier} = 295\ \Omega \cdot 0.02\ A = 5.9\ V$$

- terminal voltage at the probe with Zener barrier:

$$V_{KI} = V_{S\ up\ min} - V_{ab\ barrier} = 22.8\ V - 5.9\ V = 16.9\ V$$

- minimum supply voltage of the probe (according to data sheet):

$$V_{KI\ min} = 12\ V_{DC}\ (\text{corresponding to } V_{S\ min})$$

Condition:

$$V_{KI} \geq V_{KI\ min}$$

Result:

The terminal voltage of the probe with Zener barrier lies at 16.9 V and is therefore higher than the minimum supply voltage of the probe which lies at 12 V_{DC}. This means, the Zener barrier has been selected correctly regarding the supply voltage.

NOTE - Note that no line resistances have been listed in this calculation. However, these will lead to an additional voltage drop that must be considered.

4.3 Electrical installation

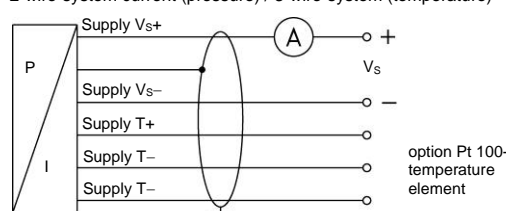
Connect the device electrically according to the information specified on the manufacturing label, the following table, and the connection circuit diagram.

Pin configuration:

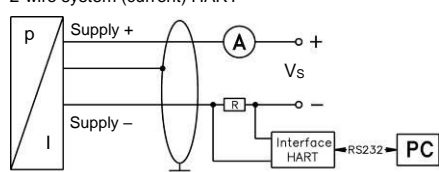
Electrical connections	cable colours (IEC 60757)
Supply +	WH (white)
Supply -	BN (brown)
Supply T+ (with Pt 100)	YE (yellow)
Supply T- (with Pt 100)	GY (grey)
Supply T- (with Pt 100)	PK (pink)
Shield	GNYE (green-yellow)

Wiring diagrams:

2-wire-system current (pressure) / 3-wire-system (temperature)



2-wire system (current) HART®



NOTE - For a clear identification, the intrinsically safe cables are marked with light blue shrink tubing (over the cable insulation). If the cable has to be modified (e. g. shortened) and the marking at the cable end has been lost in the process, it must be restored (for example, by marking it again with light blue shrink tubing or an appropriate identification sign).

NOTE - With shielded cables, the cable shield must be connected to earth potential. Use the appropriate grounding clamps for this. Pay attention to a low-impedance connection. Avoid potential differences (earth potential) between measuring and connection points, because this can lead to a defect in the probe. To avoid this, use a suitable connection technology or suitable equipotential bonding.

NOTE - The cable contains a ventilation tube for pressure equalization. Route the end of the cable into an area or suitable connection box which is as dry as possible and free from aggressive gases, in order to prevent any damage.

NOTE - Usually, the required cable is included in the scope of delivery. If it is although necessary to connect an existing or special cable, the total resistance will increase. For applications, where this additional resistance of the connecting cable could cause problems, this cable has to be checked with the following calculation.

$$R_L = \frac{\rho \cdot l}{A}$$

with R_L: resistance of connecting cable in Ω
ρ: specific resistance in Ω mm²/m
l: cable length in m
A: cross section of conductor in mm²

$$V_{Lor} = (R_{L1} + R_{L2} + \dots + R_{Lmax}) \cdot 0.02\ A$$

with V_{Lor}: total voltage drop
R_{Lor}: load resistance
(to be taken out of the current data sheet)

following condition has to be fulfilled:

$$V_S > V_{Lor} + V_{Smin}$$

with V_S: planned supply voltage
V_{S min}: minimal supply voltage
(to be taken out of the current data sheet)

4.4 HART® communication (for H-Devices)

	Danger of death from explosion - The intrinsically safe circuit for connecting a HART® communications interface (HART® communicator or HART® modem) may be broken only if there is no risk of an explosion.
--	---

The analogue output signal is overridden by an additional signal according to the HART®-specification. The device can be configured via a HART®-communication device. Therefore, we suggest our programming kit CIS-G (available as accessory). It consists of HART®-modem, connecting cables as well as configuration software and allows a simple and time-saving configuration of all parameters. (The software is compatible with all Windows®-systems from Windows 98 and higher.)

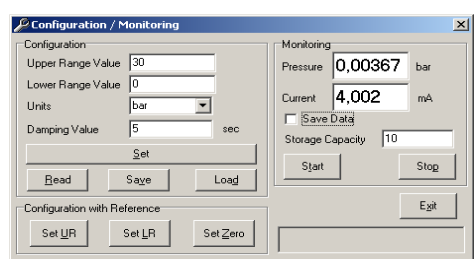


Fig. 5 Configuration software

maximal cable length between device and power supply:

$$L_{max} = \frac{65 \cdot 10^6}{R_V \cdot C_V} - \frac{40 \cdot 10^3}{C_V}$$

with L_{max}: maximum length of cable in [m]
R_V: resistance of the cable together with the load resistance in [Ω]
C_V: capacity of the cable in [pF/m]

resistance R:

$$R = \frac{U - 12}{0.024}\ \Omega$$

with U: power supply in [V_{DC}]

The resistance must be at least 240 Ω.

5. Commissioning

	Danger of death from explosion, airborne parts, leaking fluid, electric shock - Explosion hazard if the operating voltage is too high (max. 28 V _{DC})! - Operate the device only within the specification! (according to data sheet and EU-type examination certificate)
--	--

- ✓ The device has been installed properly.
- ✓ The device does not have any visible defect.

In case of highly precise devices with an accuracy of 0.1 % FSO, a microcontroller-controlled electronic system is used for signal processing. This electronic system is used for signal improvement. Due to the principle, the processing of measured values requires a longer time than with purely analogue sensors, which only comprise amplification circuitry. Due to the longer processing time, the output signal follows the measured value not continuously but in jumps. In case of relatively stable and slowly changing measured values, this property plays a minor role. Compare this with the information on the adjusting time in the data sheet.

6. Maintenance

	Danger of death from airborne parts, leaking fluids, electric shock - Always service the device in a depressurized and de-energized condition!
	Danger of injury from aggressive fluids or pollutants - Depending on the measured medium, this may constitute a danger to the operator. - Wear suitable protective clothing e.g. gloves, safety goggles.

If necessary, clean the housing of the device using a moist cloth and a non-aggressive cleaning solution. During the cleaning processes, note the compatibility of the cleaning media used in combination with the media-wetted materials of the pressure measuring devices. Permissible concentrations and temperatures must be observed. Verification/validation by the user is essential.

Deposits or contamination may occur on the diaphragm/pressure port in case of certain media. Depending on kind and quality of the process, suitable cyclical maintenance intervals must be specified by the operator. As part of this, regular checks must be carried out regarding corrosion, damage of diaphragm/seal(s) and signal shift. A periodical replacement of the seal(s) may be necessary.

If the diaphragm is calcified, it is recommended to send the device to BD|SENSORS for decalcification. Please note the chapter "Service / repair" below.

NOTE - Wrong cleaning or improper touch may cause an irreparable damage on the diaphragm. Therefore, never use pointed objects or pressured air for cleaning the diaphragm.

7. Troubleshooting

	Danger of death from airborne parts, leaking fluids, electric shock - If malfunctions cannot be resolved, put the device out of service (proceed according to chapter 8 up to 10)
	Danger of death from explosion - As a matter of principle, work on energized parts, except for intrinsically safe circuits, is prohibited while there is an explosion hazard.

In case of malfunction, it must be checked whether the device has been correctly installed mechanically and electrically. Use the following table to analyse the cause and resolve the malfunction, if possible.

Fault: no output signal	
Possible cause	Fault detection / remedy
Connected incorrectly	Checking of connections
Conductor/wire breakage	Checking of all line connections.
Defective measuring device (signal input)	Checking of ammeter (miniature fuse) or of analogue input of your signal processing unit

Fault: analogue output signal too low	
Possible cause	Fault detection / remedy
Load resistance too high	Checking of load resistance (value)
Supply voltage too low	Checking of power supply output voltage
Defective energy supply	Checking of the power supply and the supply voltage being applied to the device

Fault: slight shift of the output signal	
Possible cause	Fault detection / remedy
Diaphragm of sensor is severely contaminated, calcified or crusted	Checking of diaphragm; if necessary, send the device to BD SENSORS for cleaning

Fault: large shift of the output signal	
Possible cause	Fault detection / remedy
Diaphragm of sensor is damaged (caused by overpressure or mechanically)	Checking of diaphragm; when damaged, send the device to BD SENSORS for repair

Fault: wrong or no output signal	
Possible cause	Fault detection / remedy
Cable damaged mechanically, thermally, or chemically	Checking of cable; pitting corrosion on the stainless-steel housing as a result of damage on cable; when damaged, send the device to BD SENSORS for repair

8. Removal from service

	Danger of death from airborne parts, leaking fluids, electric shock - Disassemble the device in a depressurized and de-energized condition!
	Danger of injury from aggressive media or pollutants - Depending on the measured medium, this may constitute a danger to the operator. - Wear suitable protective clothing e.g. gloves, goggles.

NOTE - After dismantling, mechanical connections must be fitted with protective caps.

9. Service / repair

Information on service / repair:

- www.bdsensors.de
- info@bdsensors.de
- Service phone: +49 (0) 92 35 98 11 0

9.1 Recalibration

During the life-time of a probe, the value of offset and span may shift. As a consequence, a deviating signal value in reference to the nominal pressure range starting point or end point may be transmitted. If one of these two phenomena occurs after prolonged use, a recalibration is recommended to ensure furthermore high accuracy.

9.2 Return

	Danger of injury from aggressive media or pollutants - Depending on the measured medium, this may constitute a danger to the operator. - Wear suitable protective clothing e.g. gloves, goggles.
--	---

Before every return of your device, whether for recalibration, decalcification, modifications or repair, it has to be cleaned carefully and packed shatter-proofed. You have to enclose a notice of return with detailed defect description when sending the device. If your device came in contact with harmful substances, a declaration of decontamination is additionally required. Appropriate forms can be downloaded from our homepage. Download these by accessing www.bdsensors.de or request them:

info@bdsensors.de | phone: +49 (0) 92 35 / 98 11 0

In case of doubt regarding the fluid used, devices without a declaration of decontamination will only be examined after receipt of an appropriate declaration!

10. Disposal

	Danger of injury from aggressive media or pollutants - Depending on the measured medium, this may constitute a danger to the operator. - Wear suitable protective clothing e.g. gloves, goggles.
--	---

The device must be disposed of according to the European Directive 2012/19/EU (waste electrical and electronic equipment). Waste equipment must not be disposed of in household waste!

NOTE - Dispose of the device properly!

11. Warranty terms

The warranty terms are subject to the legal warranty period of 24 months, valid from the date of delivery. If the device is used improperly, modified, or damaged, we will rule out any warranty claim. A damaged diaphragm will not be accepted as a warranty case. Likewise, there shall be no entitlement to services or parts provided under warranty if the defects have arisen due to normal wear and tear.

12. EU declaration of conformity / CE

The delivered device fulfils all legal requirements. The applied directives, harmonised standards and documents are listed in the EC declaration of conformity, which is available online at: <http://www.bdsensors.de>. Additionally, the operational safety is confirmed by the CE sign on the manufacturing label.

DX14-LMK 457:

EU-Konformitätserklärung EU Declaration of Conformity	
BD SENSORS GmbH erklärt hiermit in alleiniger Verantwortung, dass die Produkte BD SENSORS GmbH erklären in alleiniger Verantwortung, dass die Produkte mit den aufgeführten Richtlinien und Normen übereinstimmen. Full the below mentioned requirements and standards.	
DMK 351 DMK 351P LMK 351 LMK 358 LMK 381 LMK 382 LMK 457 LMK 459 LMK 459	EN 61326-1:2013
Für Geräte mit Ex-Zulassung For devices with II approval	
2014030EU (EMC)	EN 61326-1:2013
201185EU (RoHS)	
Für Geräte mit Ex-Zulassung For devices with II approval	
2014030EU (ATEX)	DX14-DMK 351 DX14-DMK 351P DX14-LMK 351 DX14-LMK 358 DX14-LMK 381 DX14-LMK 382 DX14-LMK 457
IBEAU07ATEX1070 X	EN IEC 60079-0:2018, EN 60079-11:2012
Besondere Stelle / Kennnummer Notified Body / identification number	IBEAU Institut für Sicherheitstechnik GmbH / 0637
IBEAU15ATEX0013	EN ISO/IEC 60079-34:2012
Besondere Stelle / Kennnummer Notified Body / identification number	IBEAU Institut für Sicherheitstechnik GmbH / 0637
Thüringen, 2022-01-17	
D. Sarverten Leiter Konstruktion/ Mechanical Design Manager	M. Martin Leiter Elektrische Entwicklung/ Electrical Design Manager

DX14A-LMK 458:

EU-Konformitätserklärung EU Declaration of Conformity	
BD SENSORS GmbH erklärt hiermit in alleiniger Verantwortung, dass die Produkte BD SENSORS GmbH erklären in alleiniger Verantwortung, dass die Produkte mit den aufgeführten Richtlinien und Normen übereinstimmen. Full the below mentioned requirements and standards.	
DMK 458 DMK 458 LMK 458	EN 61326-1:2013
Für Geräte mit Ex-Zulassung For devices with II approval	
2014030EU (EMC)	EN 61326-1:2013
201185EU (RoHS)	
Für Geräte mit Ex-Zulassung For devices with II approval	
2014030EU (ATEX)	DX14A-DMK 458 DX14A-LMK 458 DX14A-LMK 458
IBEAU07ATEX1190 X	EN 60079-0:2018+A11:2013, EN 60079-11:2012
Besondere Stelle / Kennnummer Notified Body / identification number	IBEAU Institut für Sicherheitstechnik GmbH / 0637
IBEAU15ATEX0013	EN ISO/IEC 60079-34:2012
Besondere Stelle / Kennnummer Notified Body / identification number	IBEAU Institut für Sicherheitstechnik GmbH / 0637
Thüringen, 2019-09-16	
D. Sarverten Leiter Konstruktion/ Mechanical Design Manager	M. Martin Leiter Elektrische Entwicklung/ Electrical Design Manager

DX14B-LMK 487 / DX14B-LMK 487 H:

EU-Konformitätserklärung EU Declaration of Conformity	
BD SENSORS GmbH erklärt hiermit in alleiniger Verantwortung, dass die Produkte BD SENSORS GmbH erklären in alleiniger Verantwortung, dass die Produkte mit den aufgeführten Richtlinien und Normen übereinstimmen. Full the below mentioned requirements and standards.	
DMK 387, LMK 387, LMK 387H, LMK 487, LMK 487H	EN 61326-1:2013
Für Geräte mit Ex-Zulassung For devices with II approval	
2014030EU (EMC)	EN 61326-1:2013
201185EU (RoHS)	
Für Geräte mit Ex-Zulassung For devices with II approval	
2014030EU (ATEX)	DX14B-DMK 387, DX14B-LMK 387, DX14B-LMK 387H, DX14B-LMK 487, DX14B-LMK 487H
IBEAU07ATEX1066 X	EN 60079-0:2018, EN 60079-11:2012
Besondere Stelle / Kennnummer Notified Body / identification number	IBEAU Institut für Sicherheitstechnik GmbH / 0637
IBEAU15ATEX0013	EN ISO/IEC 60079-34:2012
Besondere Stelle / Kennnummer Notified Body / identification number	IBEAU Institut für Sicherheitstechnik GmbH / 0637
Thüringen, 2019-09-16	
D. Sarverten Leiter Konstruktion/ Mechanical Design Manager	M. Martin Leiter Elektrische Entwicklung/ Electrical Design Manager

DX15A-LMK 458H:

EU-Konformitätserklärung EU Declaration of Conformity	
BD SENSORS GmbH erklärt hiermit in alleiniger Verantwortung, dass die Produkte BD SENSORS GmbH erklären in alleiniger Verantwortung, dass die Produkte mit den aufgeführten Richtlinien und Normen übereinstimmen. Full the below mentioned requirements and standards.	
LMK 398H LMK 391H LMK 392H LMK 457H LMK 488H LMK 399H	EN 61326-1:2013
Für Geräte mit Ex-Zulassung For devices with II approval	
2014030EU (EMC)	EN 61326-1:2013
201185EU (RoHS)	
Für Geräte mit Ex-Zulassung For devices with II approval	
2014030EU (ATEX)	DX15A-LMK 398H DX15A-LMK 391H DX15A-LMK 392H DX15A-LMK 457H DX15A-LMK 488H DX15A-LMK 399H
IBEAU07ATEX1186 X	EN 60079-0:2018+A11:2013, EN 60079-11:2012
Besondere Stelle / Kennnummer Notified Body / identification number	IBEAU Institut für Sicherheitstechnik GmbH / 0637
IBEAU15ATEX0013	EN ISO/IEC 60079-34:2012
Besondere Stelle / Kennnummer Notified Body / identification number	IBEAU Institut für Sicherheitstechnik GmbH / 0637
Thüringen, 2019-09-16	
D. Sarverten Leiter Konstruktion/ Mechanical Design Manager	M. Martin Leiter Elektrische Entwicklung/ Electrical Design Manager